



Dane County Comprehensive Plan  
Dept. of Planning & Development  
210 Martin Luther King Jr. Blvd. Room 116  
Madison, WI 53703  
[www.daneplan.org](http://www.daneplan.org)

### Legend

#### Farmland Preservation

- Agricultural Preservation Areas
- Rural Development / Transitional
- Town Ag. Preservation Area

#### Service Areas

- Limited
- Urban

#### Env. and Open Space Corridors



#### Overlapping Plan Areas

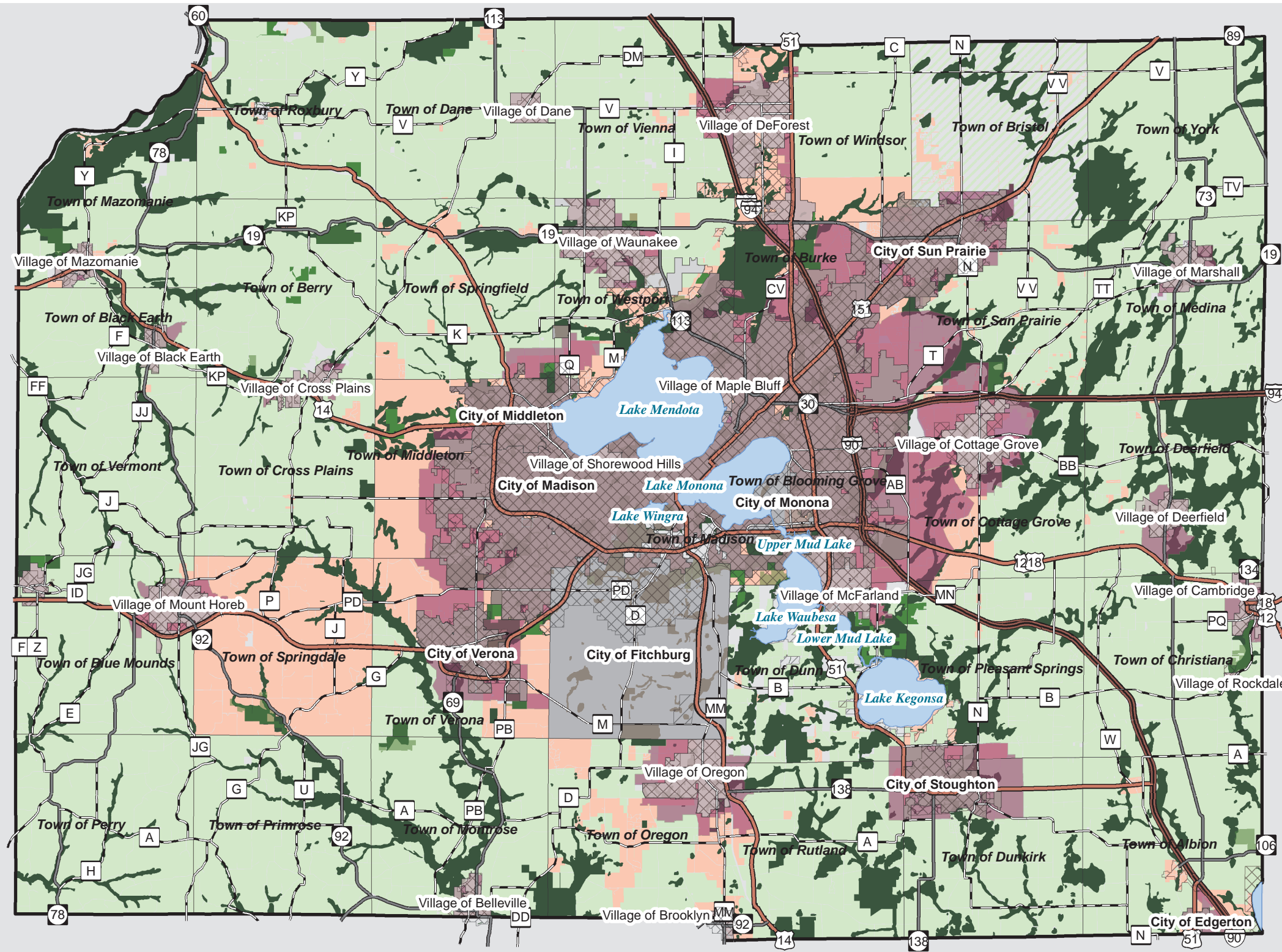
- City and Village Plans

#### Parks and Open Space Plan

- Dane County Parks Commission Lands

### Standard Legend

- Interstate
- US Highway
- State Highway
- County Highway
- City
- Village
- Town
- Major Lake



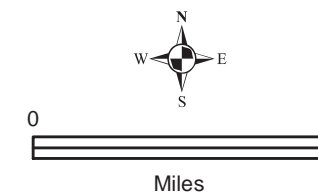
### What you're looking at:

- The growth factors in Dane County:
1. Farmland Preservation Plan
  2. Service Areas
  3. Env. and Open Space Corridors
  4. Overlapping Plans
  5. Parks and Open Space

\*See plan text for details on the map categories.

For more information on individual features:

1. [http://www.countyofdane.com/PLANDEV/planning/farm\\_preservation.aspx](http://www.countyofdane.com/PLANDEV/planning/farm_preservation.aspx)
2. <http://www.danecorpc.org>
3. <http://www.danecorpc.org>
4. See the local plans for details and Wis Stat 59.69 and 66.1001.
5. <http://www.countyofdane.com/lwrp/parks/plandev.asp>



January 1, 2008



Source Info: Farmland Preservation & Overlapping Plan Areas (DPD). Park Commission Lands (LWRD). Service Areas & Envr. & Open Space Corridors (CARPC) Road Network: 2006 (DCLIO). Municipal Boundaries & Water: 2006 (DCLIO). This map was prepared through the Department of Planning and Development in conjunction with the Dane County Land & Water Resources Department, Land Information Office and the Dane County Regional Planning Commission.

# Currently Adopted Town Plans

## Dane County Farmland Preservation Plan

Name	CB Adoption	Exec. Approval	Type	DCB Resolution
Town of Albion	8/16/2007	8/21/2007	Comp Plan	226, 06-07
Town of Berry	4/10/2003	4/15/2003	Comp Plan	244, 02-03
Town of Black Earth	10/5/2006	10/10/2006	Amendment	72, 06-07
Town of Blooming Grove	9/7/2000	9/11/2000	LU Plan	47, 00-01
Town of Blue Mounds	9/3/1998	9/8/1998	Amendment	75, 98-99
Town of Bristol	5/7/1981		LU Plan	431, 80-81
Town of Burke	9/23/1999	10/7/1999	LU Plan	20, 99-00
Town of Christiana	7/10/2003	7/14/2003	Amendment	307, 02-03
Town of Cottage Grove	12/20/2007	12/27/2007	Amendment	101, 07-08
Town of Cross Plains	2/5/2004	2/10/2004	Amendment	212, 03-04
Town of Dane	11/7/2002	11/11/2002	Comp Plan	49, 02-03
Town of Deerfield	12/20/2007	12/27/2007	Comp Plan	102, 07-08
Town of Dunkirk	7/19/2007	7/30/2007	Comp Plan	208, 06-07
Town of Dunn	2/4/1999	2/8/1999	Amendment	198, 98-99
Town of Madison			Never Adopted	--
Town of Mazomanie	10/3/2002	10/16/2002	Comp Plan	52, 02-03
Town of Medina	5/7/1981		LU Plan	422, 80-81
Town of Middleton	12/3/1981		LU Plan	221, 81-82
Town of Montrose	6/1/2000	6/14/2000	LU Plan	324, 99-00
Town of Oregon	12/20/2007	12/27/2007	Amendment	125, 07-08
Town of Perry	6/2/2005	6/7/2005	LUPlan	360, 04-05
Town of Pleasant Springs	9/7/2006	9/15/2006	Comp Plan	49, 06-07
Town of Primrose	7/13/1995	7/27/1995	LU Plan	56, 95-96
Town of Roxbury	10/3/2002	10/16/2002	Comp Plan	51, 02-03
Town of Rutland	5/16/2007	5/21/2007	Comp Plan	35, 07-08 (Sub 1)
Town of Springdale	11/21/2002	12/4/2002	LU Plan	22, 02-03
Town of Springfield	8/16/2007	8/21/2007	Amendment Sub 1	23, 07-08
Town of Sun Prairie	10/7/2004	10/13/2004	Comp Plan	69, 04-05
Town of Vermont	8/20/1998	8/24/1998	Amendment	21, 98-99
Town of Verona	7/20/2006	8/1/2006	Adopt w/ Amend.	309, 05-06
Town of Vienna	12/7/2006	12/19/2006	Comp Plan	144, 06-07
Town of Westport	11/4/2004	11/11/2004	Comp Plan	114.04-05
Town of Windsor	12/7/2006	12/19/2006	Comp Plan	243, 05-06
Town of York	2/1/2007	2/6/2007	Comp Plan	135, 06-07