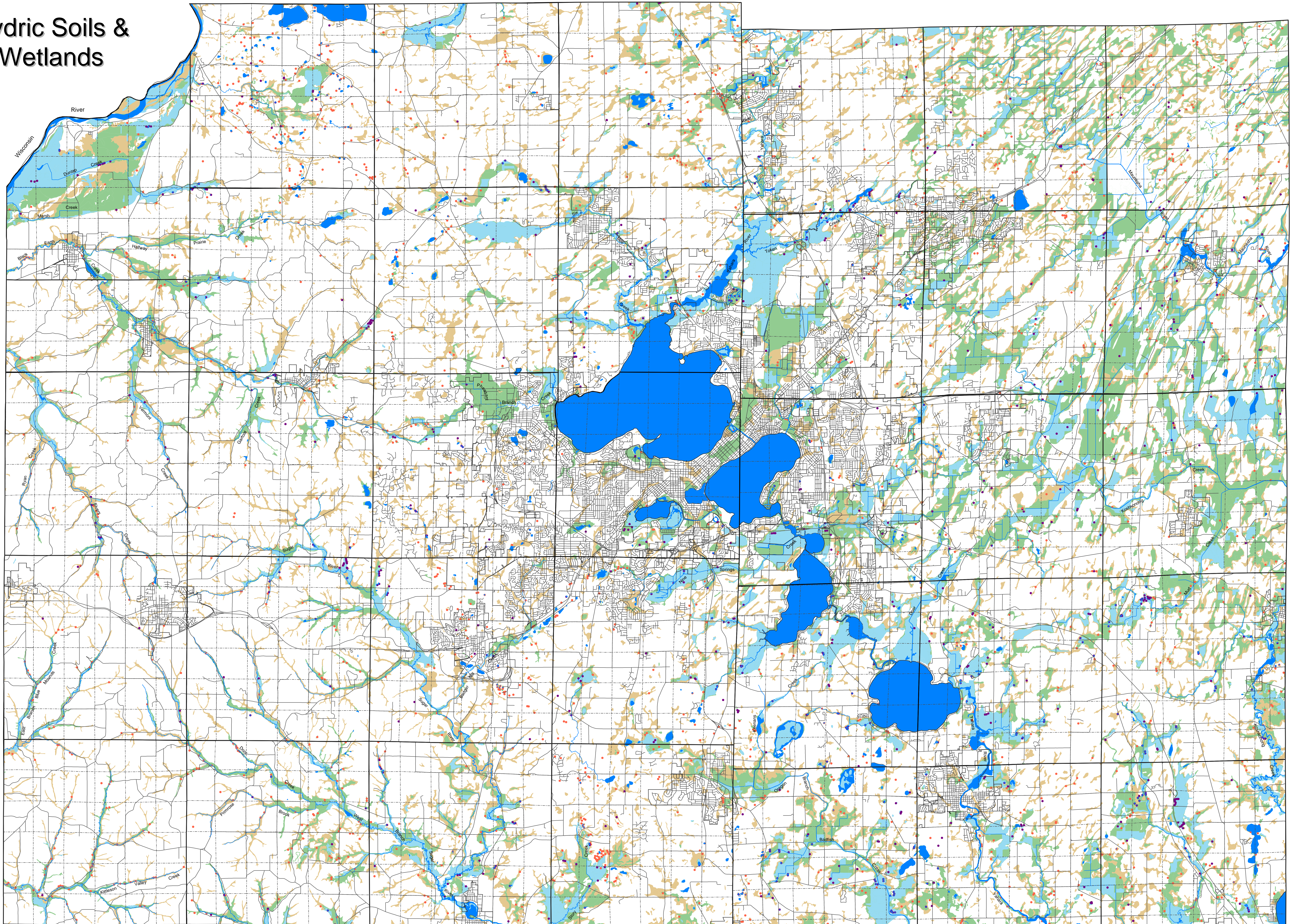


Hydric Soils & Wetlands



- Non-hydric soil likely to contain hydric inclusions
- Hydric soil
- Wetland
- Wetland smaller than 2 acres
- Excavated pond smaller than 2 acres
- Open water
- Road
- Section boundary
- Stream or ditch

Hydric Soils

According to the Hydric Soil Definition (Federal Register, July 13, 1994), "a hydric soil is a soil that formed under conditions of saturation, flooding, or ponding long enough during the growing season to develop anaerobic conditions in the upper part." This definition replaced an older 1985 version and accomplished two things. First, a soil that is artificially drained or protected (ditches, levees, etc.) is a hydric soil if the soil in its undisturbed state meets the definition of a hydric soil. Estimated soil properties for manipulated soils are based on best professional estimates of the properties thought to exist before manipulation. Second, the link between the definition and criteria was removed (Hydric Soil Tech. Note 1). Proper use of Hydric Soil Terminology: <http://www.state.nj.us/dep/soil/hydric/tech.htm#note1>.

A list of Dane County hydric soils was developed using the National Hydric Soils Criteria. It lists map units in the soil survey areas which contain hydric components or contain hydric inclusions. The hydric list is updated whenever additional hydric components or inclusions

are identified by field investigations, or there are changes in the National Hydric Soils Criteria (USDA Natural Resources Conservation Service-Wisconsin Technical Guide Section II, March 1996).

Hydric Soils Criteria Codes and Definitions
From "Hydric Soils of the United States" (USDA Miscellaneous Publication No. 1491, June, 1991, as revised in the Federal Register, Vol. 60, No. 37, February 24, 1995)

1. All Histosols, except Follets, or
2. Soils in Aquic suborders, great groups, or subgroups, Albolls suborder, Aquisols, Pachic subgroups, or Cumulic subgroups that are:
 - A. Somewhat poorly drained with a water table equal to 0.0 foot (0) from the surface during the growing season, or
 - B. Poorly drained or very poorly drained and have either:
 - (1) A water table equal to 0.0 ft during the growing season if features are coarse sand, sand, or fine sand in all layers within 20 inches (in), or for other soils,
 - (2) A water table at less than or equal to 0.5 ft from the surface during the growing season if permeability is equal to or greater than 6.0 in/hr in all layers within 20 in, or
 - (3) A water table at less than or equal to 1.0 ft from the surface during the growing season if permeability is less than 6.0 in/hr in any layer within 20 in, or
 3. Soils that are frequently ponded for long or very long duration during the growing season, or
 4. Soils that are frequently flooded for long or very long duration during the growing season.

For more information, contact:
David Roberts, (608) 224-3752
Resource Soil Scientist
Natural Resources Conservation Service
1 Fen Oak Court, Room 208
Madison, WI 53718-8812

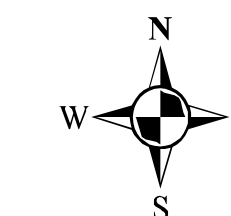
Wetlands

The Wisconsin Department of Natural Resources (WDNR) defines a wetland as "an area where water is at, near, or above the land surface long enough in the course of supporting aquatic or hydrophytic vegetation, and which has soils indicative of wet conditions." (p. 23 (2)(1), Wis. Stats.). The dominant characteristics of wetlands are a combination of wet soils, hydrology, and wetland plants. Examples of wetlands are deep and shallow water marshes, wet meadows, fens, bogs, wooded swamps, floodplain forests and wetlands, and riparian communities. Wetlands can vary from areas which have seasonally saturated soil conditions to areas which have standing water year-round. Types of vegetation that can be found in wetlands range from pond lilies to cattails to reed cany grasses to black ash to silver maple.

For additional information, see:
* A User's Guide to the Wisconsin Wetland Inventory DNR Publ. W2022-92
* Wisconsin Wetland Inventory Classification Guide DNR Publ. W2022-92
(from <http://www.dnr.state.wi.us/org/gnu/uproc/surface/wetlands/wetlands/wetlands.htm>)

For more information contact:
Caitlin Lawrence, (608) 266-0750
Wisconsin Department of Natural Resources
Bureau of Fisheries Management and Habitat Protection, PH6
Box 792
Madison, WI 53707-7921

0 1.25 2.5 5 Miles



Source Info:
Hydric Soils: Digital Soils (NRCS, LCD, LICGF).
Wetlands: 1997, (WDNR).
Section Boundaries: 1992, USGS DLG (DCLIO).
Road Network: 9/99, Parcel Derived (DCLIO).
Water: 1995, Orthophoto Derived (DCLIO).

April, 2004
This map was prepared through the Dane County Department of Planning and Development in conjunction with the Dane County Land Conservation Department, Dane County Land Information Office and the Dane County Regional Planning Commission.